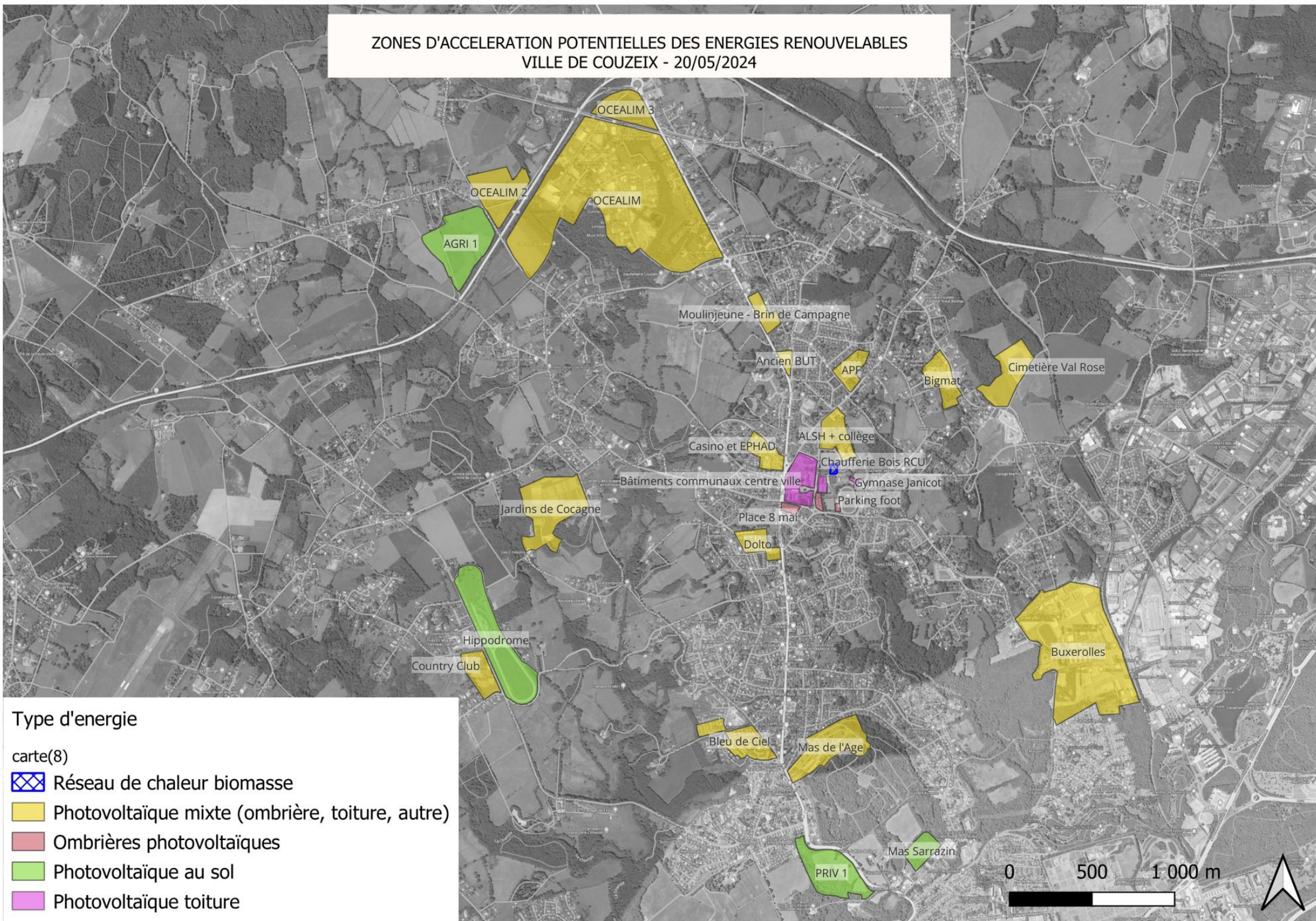

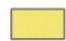
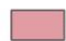




ZONES D'ACCELERATION POTENTIELLES DES ENERGIES RENOUVELABLES
VILLE DE COUZEIX - 20/05/2024



Type d'énergie

carte(8)

-  Réseau de chaleur biomasse
-  Photovoltaïque mixte (ombrière, toiture, autre)
-  Ombrières photovoltaïques
-  Photovoltaïque au sol
-  Photovoltaïque toiture